

AMERICAN ASSOCIATION  
OF PORT AUTHORITIES  
105<sup>TH</sup> ANNUAL CONVENTION  
*NEW ORLEANS, OCTOBER 25, 2016*

Government's Evolving Role in Freight Transportation  
Infrastructure Investment & Supply Chain Optimization

*By Lauren Brand, PPM*

Associate Administrator Intermodal System Development

Maritime Administration, U.S. Department of Transportation

**Pre-12<sup>th</sup> c. through 20<sup>th</sup> c.**

**definition of *port*:**

*1* : a place where ships may ride secure  
from storms : [haven](#)

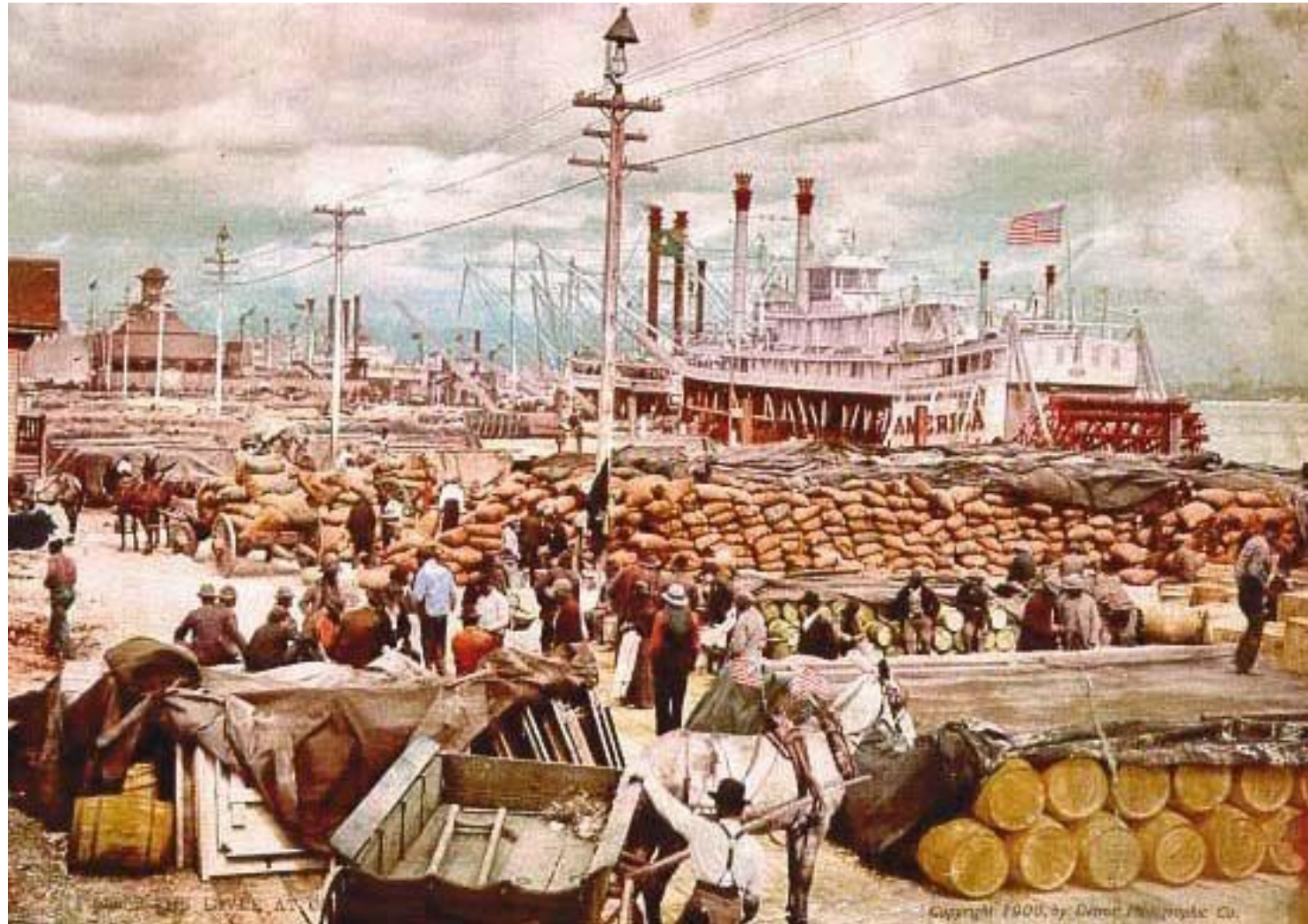
*2 a* : a harbor town or city where ships  
may take on or discharge cargo

- Merriam Webster

# Official Road Inquiry 1893 – first federal involvement in surface transportation infrastructure



# New Orleans 1900/base of Canal St. Coffee trades





# Built by U.S. Dept. of Defense for World War II *{photo 2009}*

*Life expectancy of port infrastructure = 40 – 50 years*



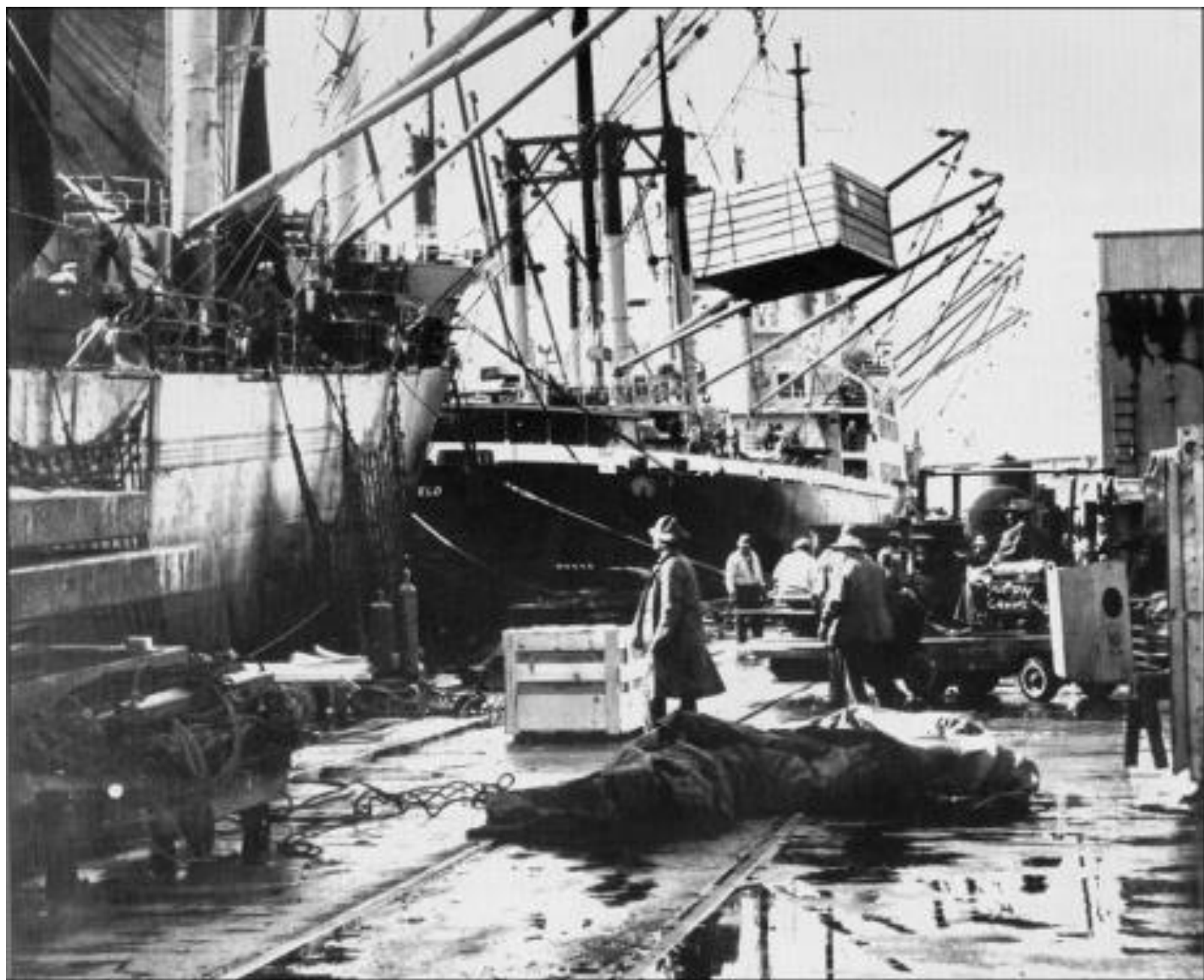
# Seattle 1953





April 26, 1956 the Ideal X loaded containers.







World's first container port began construction 1958;  
completed 1962



# 1966 Federal Railway Administration

Established purpose:  
Safety



The M-497 Black Beetle was developed by Wetzel in 1966. It was comprised of an existing Budd Rail Diesel Car (RDC-3) with an added, streamlined front cowl covering the car's blunt nose, and a pair of second-hand General Electric J47-19 jet engines.

20<sup>th</sup> century (1996)

U.S. Department of Transportation definition:

A harbor area in which are located marine terminal facilities for transferring cargo between ships and land transportation.

OR

1) Harbor with piers or docks ; 2) left side of ship when facing forward ; 3) opening in a ship's side for handling freight.

- The Bureau of Transportation Statistics



*You are not defined by your past. You are  
prepared by your past.*

Current definition of Ports in U.S. Code:

{ blank }



**Problem or Opportunity?**

## 21<sup>st</sup> c. perspective on ports:

- Ports haven't needed federal assistance in 200 years – what changed?
- Why do we need more than one on each coast?
- The ultimate intermodal hub of our nation.
- It's purpose is for trucks and trains to come alongside ships and interchange freight.



# Maritime Administration Est. 1950

## Expands Role in 21<sup>st</sup> Century

- **Legislation: Authorizes Port Infrastructure Development Program (2010 National Defense Authorization Act (PL 111-84))**
- **Purpose: Promote, Encourage, Develop Ports and Transportation Facilities in Connection with Water Commerce**
- **StrongPorts program began**

# What Changed?

- 2003 Port Security Grant program established
- 2007 Energy & Security Act of 2007 “*ports are an extension of our surface transportation system*”
- 2009 ARRA first multimodal freight grant program.
- 2010 TIGER confirmed port eligibility
- 2010 MARAD begins designating Marine Highways as part of our transportation system
- 2012 MAP-21 includes focus on freight planning
- 2015 TIFIA available to ports
- 2016 FASTLANE sets aside \$500M for freight projects, including at ports

# Federal Assistance 2009 - 2016

- ARRA – 3 projects @ \$25.85M w/\$0 match
- TIGER – 48 projects @\$578M w/\$698M match
- FASTLANE – 5 proj. @ \$115.4M w/\$166.9M match
- Total = 56 projects @ \$1.584 billion



# Projects Completed / Cost Ranges

| Number Completed | Project Type    | Average Cost | Range in Millions  |
|------------------|-----------------|--------------|--------------------|
| 15               | Berths          | \$18.56M     | \$2.32 to \$47.8   |
| 6                | Connector Roads | \$1.58M      | \$0.15 to \$3.50   |
| 13               | Connector Rail  | \$14.31M     | \$1.89 to \$43.15  |
| 10               | Rail Yards      | \$18.48M     | \$2.40 to \$108.80 |

*Inhale the future. Exhale the past.*

# TIGER Tells the Story

- Total apps from all modes: 7,298
  - Apps from Ports: 623
- Port Awards \$578M
- Total Awards \$5.2B
  - Port Requests: \$12B



# Federal Options for Port Infrastructure

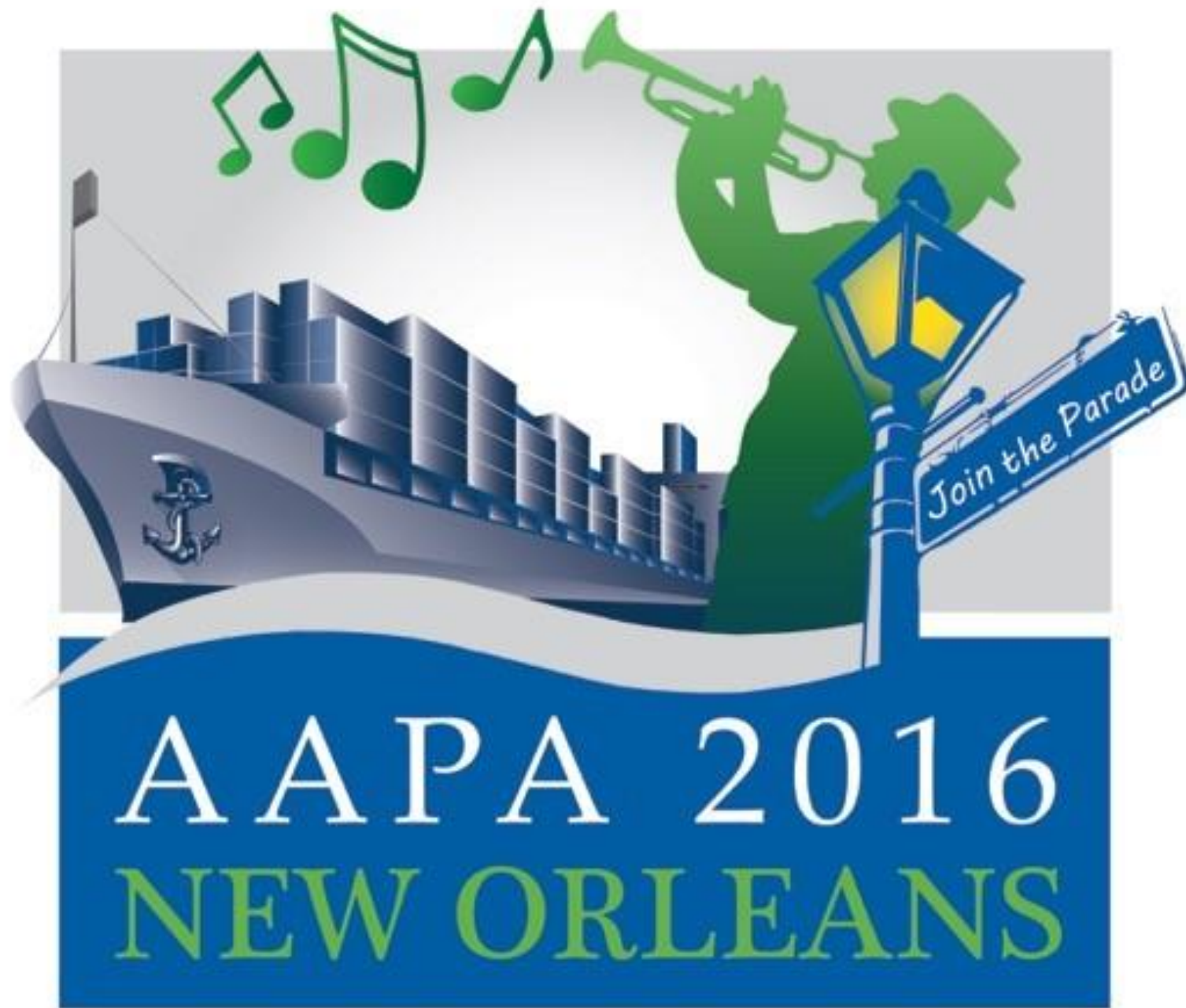
- Surface Transportation Block Grant Program
  - funded by FAST ACT at \$58B over 5 years
- FASTLANE \$4.5B over 5 years; multimodal freight & port projects eligible \$500M
- National Highway Freight program (state formula funds) \$6.3B over five years; ports eligible for 10%
- *Multimodal Freight Network map to be released soon; includes ports*

“The line between disorder and order lies  
in logistics...”

– Sun Tzu

*Thank you*

Lauren.Brand@dot.gov



AAPA 2016

NEW ORLEANS